

STEMWARE



AGC 37



AGC 38



AGC 39



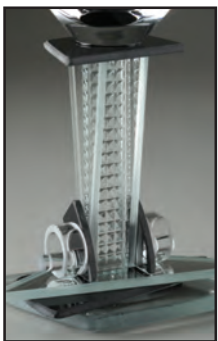
AGC 40



AGC 41



AGC 42



AG 95



AG 96



AG 97



AG 98



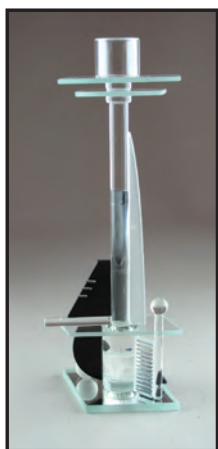
AG 99



AG 100



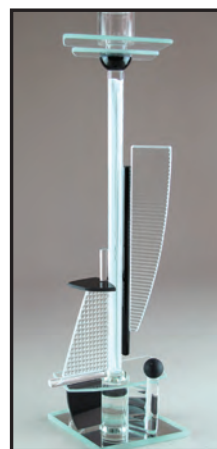
CANDLESTICKS: 10, 12 & 14 INCH



CS10-25



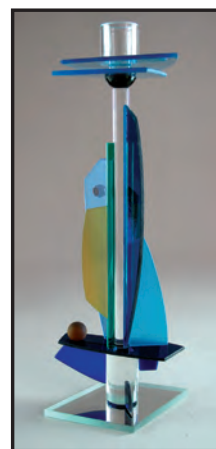
CS12-59



CS14-1



CS10-26



CS12-60



CS14-2

PERFUMES



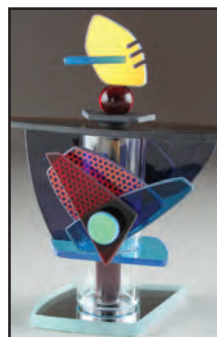
PBD 43



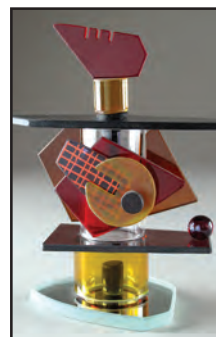
PBD 44



PBD 45



PBD 46



PBD 47



PBD 48

ABOUT OUR WORK: Assemblages are composed of a combination of glass parts which may include some or all of the following: colored flat glass, textured glass, black glass, glass rods, glass tubes, glass and metal beads, marbles, mirror, dichroic glass, sandblasted accents, ultra-violet and silicone adhesives.

(603) 357-2474

email: info@georgeponzini.com

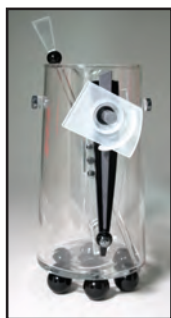
web: georgeponzini.com

MARTINI PITCHER

Two new styles for 2016. Spice up your martini glass collection with a Ponzini Martini Pitcher. 44 oz., 8 1/2 H (AGMP) includes stirrer.



AGMP 17



AGMP 18

BOWLS

Ponzini Art Glass Art slumped bowl will make an elegant centerpiece for any table. Functional or decorative. Three new styles for 2016.



B51 (14" Diameter, 8 1/2"H)

WINE • MARTINI • FLUTE

Introducing six new styles in colored glass for 2016, keeping the line fresh and innovative. This functional stemware is available in the following styles:

7 1/2 oz. Martini 6 1/8 H (AGM)

7 1/2 oz. Flute 9 1/2 H (AGF)

16 1/2 oz. Red Wine 7 1/2 H (AGR)

10 oz. All Purpose Wine 7 1/2 H (AG)



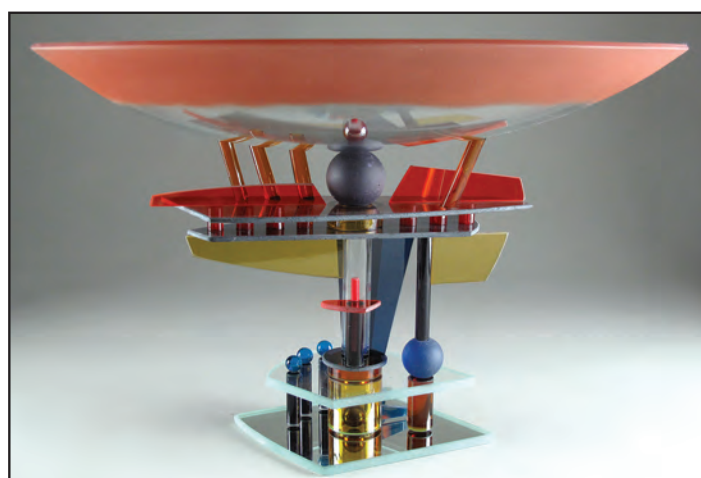
All employ high quality crystal drinking bowl. The adhesive that we use is specially formulated for stemware and is dishwasher safe although hand-washing is recommended.

PERFUMES

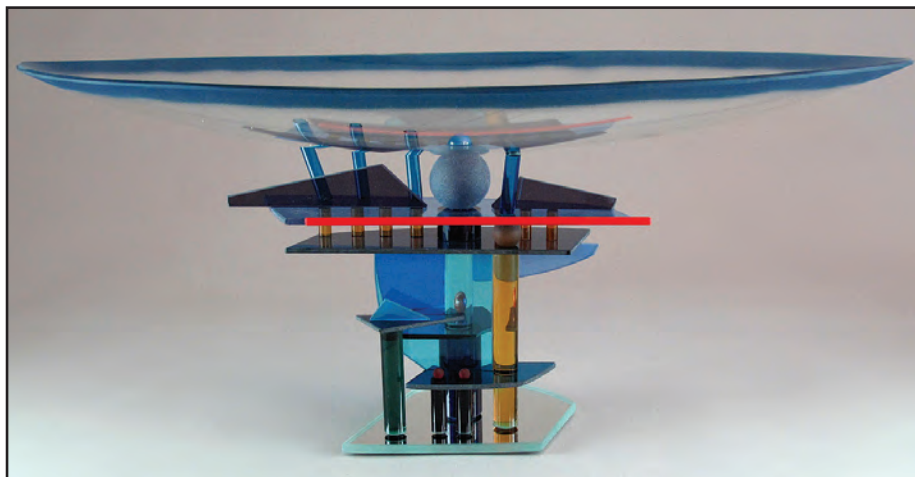
All new designs for 2016. The container system employs a stopper with a rubber seal to ensure an airtight closure. The (BPD) is approximately 5" H with 1/2 oz. capacity and all designs use dichroic elements.

CANDLESTICKS

New designs for 2016. Approximately 10" H for the (CS-10), 12" H for the (CS-12) and 14" H for the (CS-14). Mounted on an abstract base. The candle-holding tube is a Pyrex-like material and will tolerate candle heat in style.



B52 (14" Diameter, 9 1/2"H)



B53 (11" x 19" Oval, 8 1/2" H)

GEORGE PONZINI

ART GLASS

359 Jordan Road
Keene, New Hampshire 03431

**IMPORTANT!
PLEASE FILE**