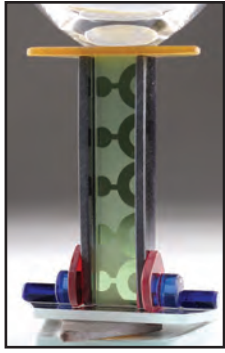


STEMS



AGC 31



AGC 32



AGC 33



AGC 34



AGC 35



AGC 36

STEMS



AG 89



AG 90



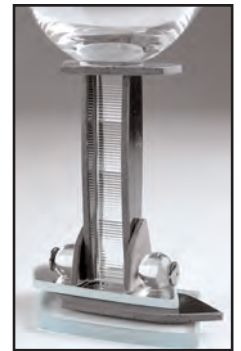
AG 91



AG 92

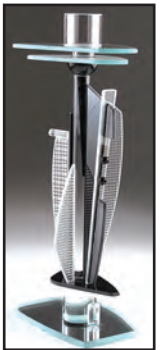


AG 93

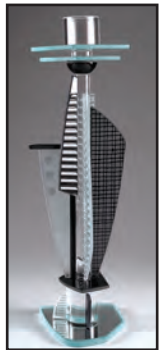


AG 94

CANDLEHOLDERS



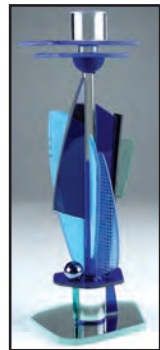
CS10-17



CS10-18



CS10-19



CS10-20



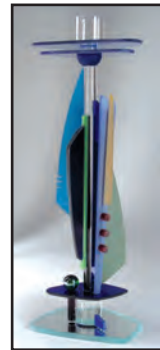
CS12-51



CS12-52



CS12-53



CS12-54

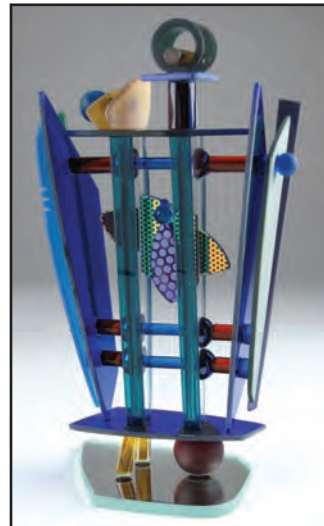
SCULPTURE

Two new designs for 2013. The limited edition small sculptures capture the essence of the one-of-a-kind larger sculptures. Signed and numbered, these are composed with dichroic elements.

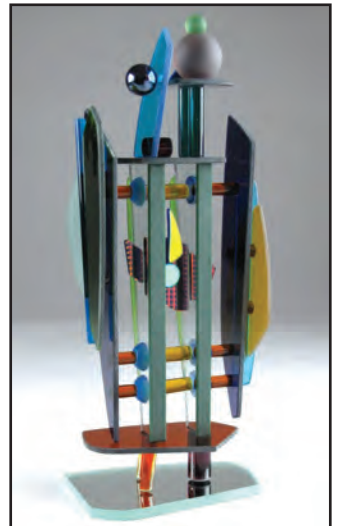
See current and past large one-of-a-kind sculptures at GeorgePonzini.com.



S-3 (10" x 4" x 3")

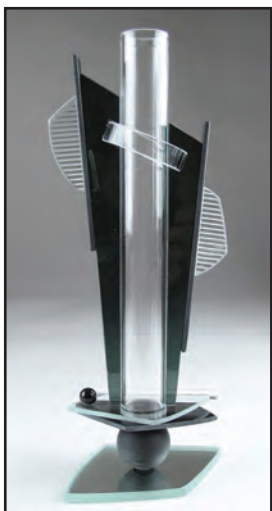


S-4 (9" x 5" x 3")



S-5 (10" x 4" x 3")

BUD VASE



BV-23



BV-24



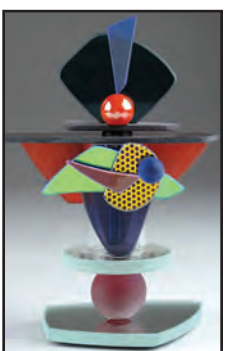
BV-25



BV-26

The Ponzini Bud Vase will enhance the presentation of any long stem flower. 11" x 4" x 3"

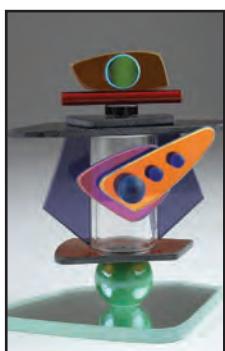
PERFUMES



PBD 37



PBD 38



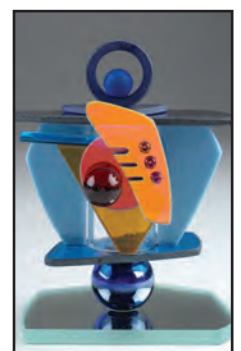
PBD 39



PBD 40



PBD 41



PBD 42

ABOUT OUR WORK: Assemblages are composed of a combination of glass parts which may include some or all of the following: colored flat glass, textured glass, black glass, glass rods, glass tubes, glass and metal beads, marbles, mirror, dichroic glass, sandblasted accents, ultra-violet and silicone adhesives.

(603) 357-2474

email: info@georgeponzini.com

web: georgeponzini.com

MARTINI PITCHER

Spice up your martini glass collection with a Ponzini Martini Pitcher. 44 oz., 8 1/2" H (AGMP) includes stirrer.



AGMP 15



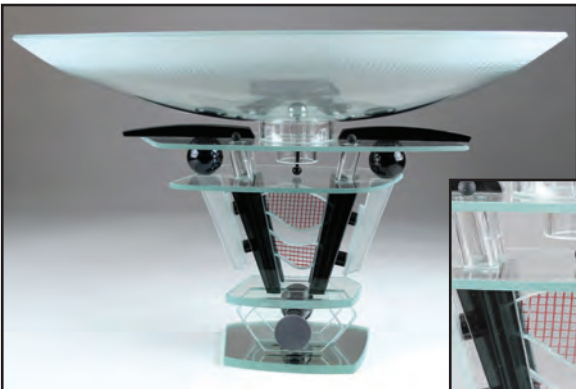
AGMP 16

LIGHTING

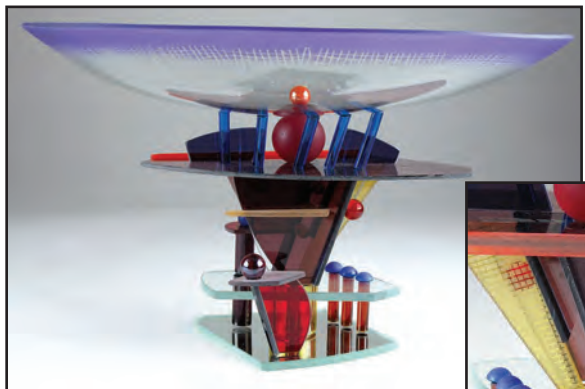
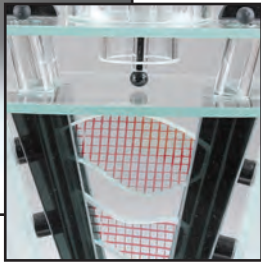
Please check www.GeorgePonzini.com for the latest offerings in addition including sconces, chandeliers and table lamps.

BOWLS

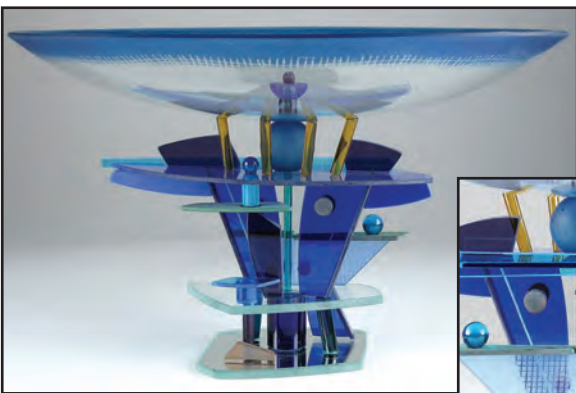
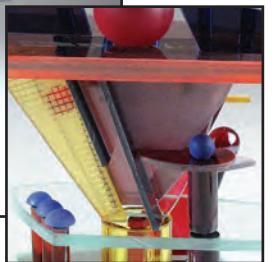
The Ponzini Art Glass slumped bowl will make an elegant centerpiece for any table. Four new styles for 2013.



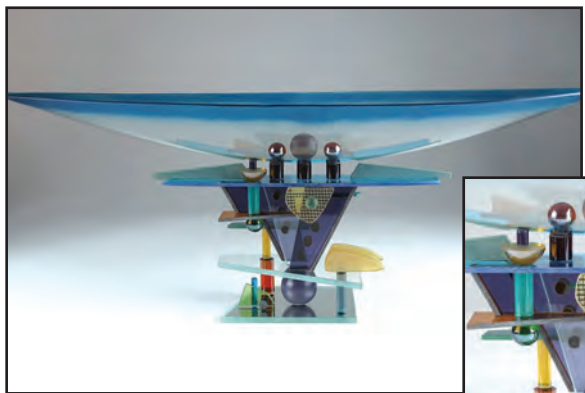
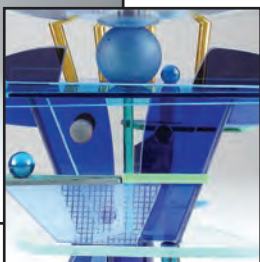
B 44 (14" Dia. x 8 1/4" H)



B 46 (14" Dia. x 8 1/4" H)



B 45 (14" Dia. x 8 1/4" H)



B 47 (elliptical: 22" x 7" x 7 1/2" H)



WINE • MARTINI • FLUTE

Introducing six new styles in colored glass for 2013, keeping the line fresh and innovative. This functional stemware is available in the following styles:



7 1/2 oz. Martini 6 1/8 H (AGM)

7 1/2 oz. Flute 9 1/2" H (AGF)

16 1/2 oz. Red Wine 7 1/2" H (AGR)

10 oz. All Purpose Wine 7 1/2" H (AG)

All employ high quality crystal drinking bowls. The adhesive that we use is specially formulated for stemware and is dishwasher safe although hand washing is recommended.

PERFUMES

All new designs for 2013. The container system employs a stopper with a rubber seal to ensure an airtight closure. They are (BPD) is approximately 5" H, 1/2 oz. capacity and all use dichroic elements.

CANDLEHOLDERS

Approximately 10" H (for the CS-10) and 12" H (for the CS-12) mounted on an abstract base. Glass tube for holding the candle is a Pyrex-like material and will tolerate candle heat in style.

GEORGE PONZINI

ART GLASS

359 Jordan Road

Keene, New Hampshire 03431

IMPORTANT!
PLEASE FILE