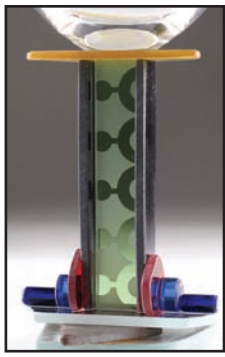


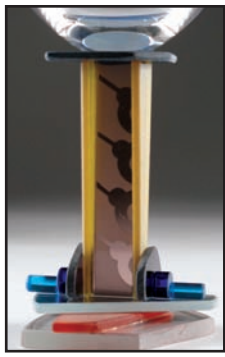
### STEMS



AGC 31



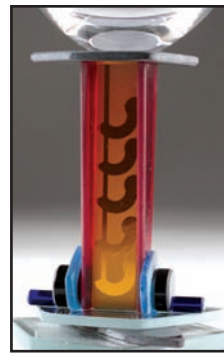
AGC 32



AGC 33



AGC 34



AGC 35



AGC 36

### STEMS



AG 83



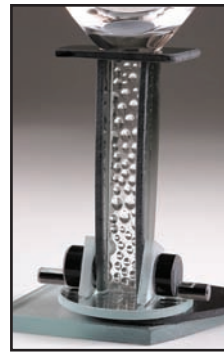
AG 84



AG 85



AG 86

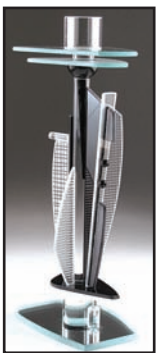


AG 87

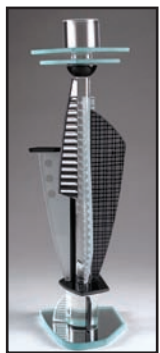


AG 88

### CANDLEHOLDERS



CS10-17



CS10-18



CS10-19



CS10-20



CS12-51



CS12-52



CS12-53



CS12-54

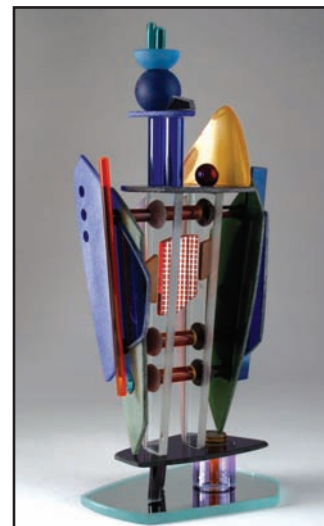
### SCULPTURE

Introducing a line of limited edition new small sculpture, originally inspired by architectural renderings of modern buildings. Each sculpture will be numbered and signed and contains dichroic elements.

Visit [GeorgePonzini.com](http://GeorgePonzini.com) to see current and past large one-of-a-kind sculpture.



S-1



S-2



S-3

### BOWL / VASE



BV-1



BV-2



BV-3



BV-4

### PERFUMES



PBD 31



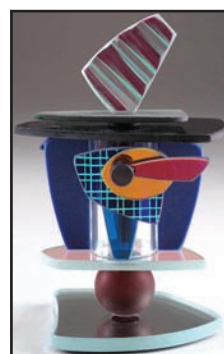
PBD 32



PBD 33



PBD 34



PBD 35



PBD 36

**ABOUT OUR WORK:** PONZINI ART GLASS' functional constructions are composed of a combination of glass parts which may include some or all of the following: textured glass, black glass, glass rods, glass tubes, glass and metal beads, marbles, mirror, dichroic glass, sandblasted accents, ultra-violet and silicone adhesives.

**(603) 357-2474**

**email: info@georgeponzini.com**

**web: georgeponzini.com**

## MARTINI PITCHER

New designs for 2012. Spice up your martini glass collection with a Ponzini Martini Pitcher. 44 oz., 8 1/2" H includes stirrer.



AGMP 15

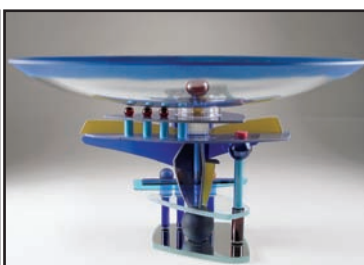


AGMP 16

## BOWLS



B 41 (8" H x 14 Diameter)



B 42 (8" H x 14 Diameter)

The Ponzini Art Glass bowl will make an elegant centerpiece for any table. The bowl itself is kiln fired slumped glass, sandblast etched and then color pigmented.



B 43 (8" H x 14 Diameter)

## BOWL / VASE



New for 2012. The slumped and cold worked sculptural glass bowl will make a beautiful centerpiece or ornamental accent. For decorative use only. (13" H x 10" x 6").

Detail of side view, left.

## WINE • MARTINI • FLUTE

Introducing 6 new colored designs and colors for 2012. This functional and beautiful stem-ware is available in the following styles:

7 1/2 oz. Martini 6 1/8 H (AGM)

7 1/2 oz. Flute 9 1/2" H (AGF)

16 oz. Red Wine 7 1/2" H (AGR)

10 oz. All Purpose Wine 7 1/2" H (AG)

All employ high quality crystal drinking bowl. The adhesive that we use is specially formulated for stemware and is dishwasher safe although hand-washing is recommended.



## PERFUMES

Some designs have been updated for 2012. These popular designs include dichroic glass and a container system that employs a stopper with a rubber seal to insure air tight closure. Approximately 5 1/2" H, 1/2 ounce capacity.

## CANDLEHOLDERS

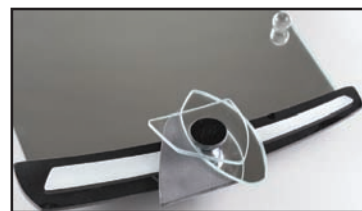
All new designs for 2012. Approximately 10" and 12" H mounted on an abstract base. Glass tube candle holder is a Pyrex material and will tolerate candle heat.

## PERFUME TRAY / MIRROR

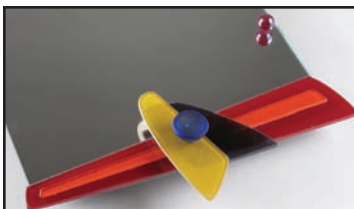
The versatile perfume tray/mirror can be used as either. The mirror is mounted on a 1/2" black backing w/ horizontal & vertical hangers with silicone bumpers (feet). Approx. 11"x16". Recommended care: avoid ammonia based cleaners. Details shown below.



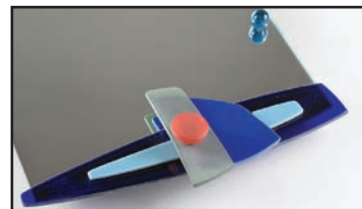
PM 73



PM 74



PM 76



PM 78

## LIGHTING

Please check [www.GeorgePonzini.com](http://www.GeorgePonzini.com) for the latest offerings in addition to these catalog items, including sconces, chandeliers and, soon to be available, table and floor lamps.

# GEORGE PONZINI ART GLASS

359 Jordan Road

Keene, New Hampshire 03431

**IMPORTANT!  
PLEASE FILE**