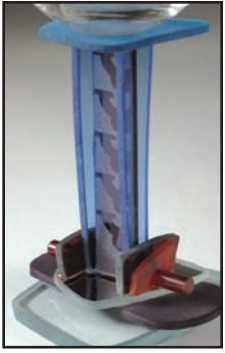


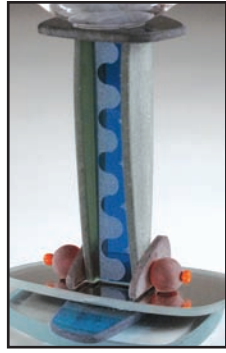
STEMS



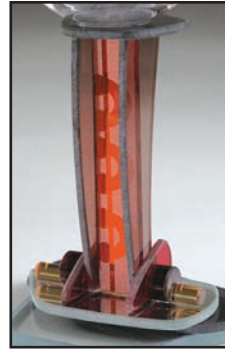
AGC 25



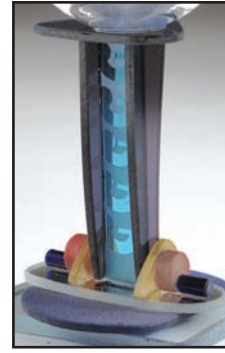
AGC 26



AGC 27



AGC 28



AGC 29



AGC 30

STEMS



AG 83



AG 84



AG 85



AG 86



AG 87

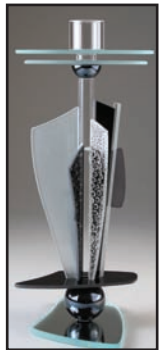


AG 88

CANDLEHOLDERS



CS10-13



CS10-14



CS10-15



CS10-16



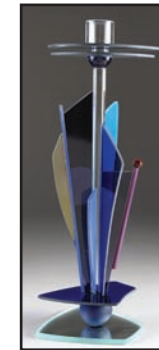
CS12-47



CS12-48



CS12-49



CS12-50

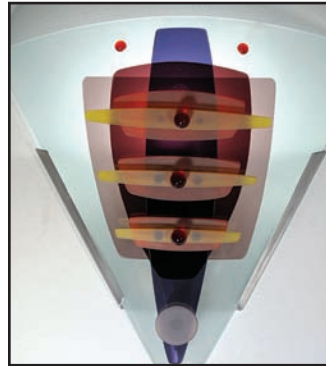
SCONCES

Designed for use with compact florescent bulbs (the "green" lighting source of the future!) providing high illumination up to the equivalent of 100 watts with low energy usage.

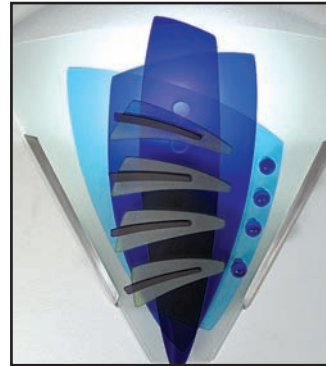
Approximately 14"x14", sconces slip onto a wall mounted base (included). Custom sizes and colors available.



SC 3

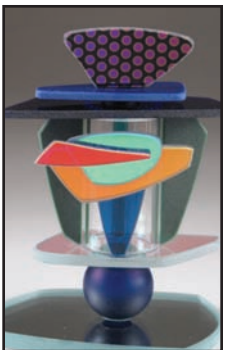


SC 4



SC 5

PERFUMES



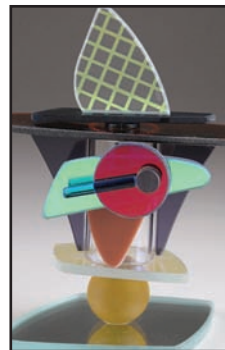
PBD 31



PBD 32



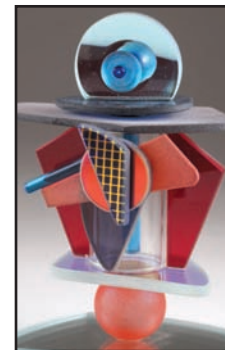
PBD 33



PBD 34



PBD 35



PBD 36

ART MIRRORS

Introducing 6 larger art mirrors for 2011. Guaranteed to spice up any wall!

Mounted on a painted black backing with an easy hanging system, approximately 10" H x 12 W "x 2" D.

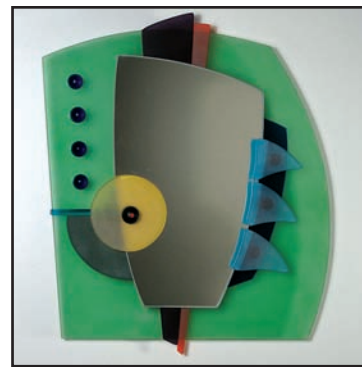
Larger art mirrors are also available.



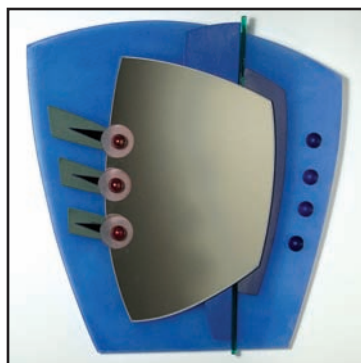
AM-7



AM-8



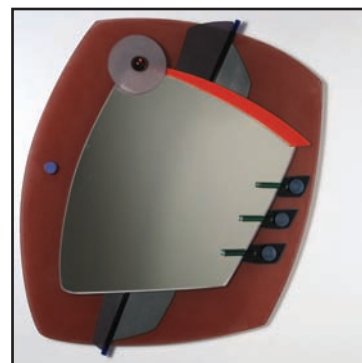
AM-9



AM-10



AM-11



AM-12

ABOUT OUR WORK: PONZINI ART GLASS' functional constructions are composed of a combination of glass parts which may include some or all of the following: textured glass, black glass, glass rods, glass tubes, glass and metal beads, marbles, mirror, dichroic glass, sandblasted accents, ultra-violet and silicone adhesives.

P/F: (603) 357-2474

email: info@georgeponzini.com

web: georgeponzini.com

MARTINI PITCHER

Spice up your martini glass collection with a Ponzini Martini Pitcher. 44 oz., 8 1/2" H includes stirrer.



AGMP 13

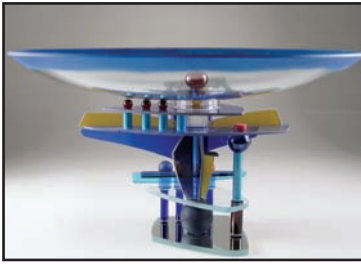


AGMP 14

BOWLS



B 41 (8" H x 14 Diameter)



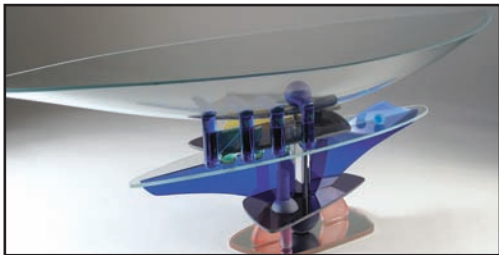
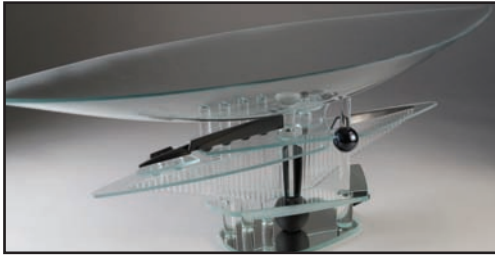
B 42 (8" H x 14 Diameter)

Three new round bowls for 2011 (above and right). Larger rectangular bowls are the same successful designs as last year (below). All bowls are slumped.



B 43 (8" H x 14 Diameter)

B 39
(7 1/2" H x
7 1/2" D
x 22 W)



B 40
(7 1/2" H
x 7 1/2" D
x 22 W)

WINE • MARTINI • FLUTE

Introducing 6 new designs and colors for 2011. This functional and beautiful stem-ware is available in the following styles:



7 1/2 oz. Martini 6 1/8 H (AGM)

7 1/2 oz. Flute 9 1/2" H (AGF)

16 oz. Red Wine 7 1/2" H (AGR)

10 oz. All Purpose Wine 7 1/2" H (AG)

All employ high quality crystal drinking bowl. The adhesive that we use is specially formulated for stemware and is dishwasher safe although hand-washing is recommended.

PERFUMES

Hot new designs for 2011. These popular designs include dichroic glass and a container system that employs a stopper with a rubber seal to insure air tight closure. Approximately 5 1/2" H, 1/2 ounce capacity.

CANDLEHOLDERS

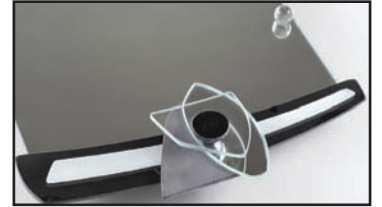
Approximately 10" and 12" H mounted on an abstract base. Glass tube candle holder is a Pyrex material and will tolerate candle heat.

PERFUME TRAY / MIRROR

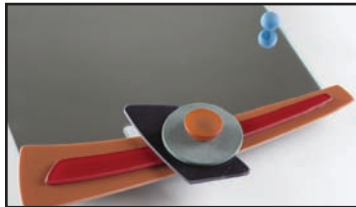
Stunning new line-up for 2011. The versatile perfume tray/mirror can be used as either. The mirror is mounted on a 1/2" black backing w/ horizontal & vertical hangers with silicone bumpers (feet). Approx. 11"x16". Recommended care: avoid ammonia based cleaners. Details shown below.



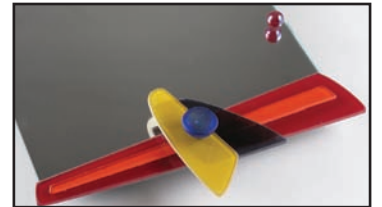
PM 73



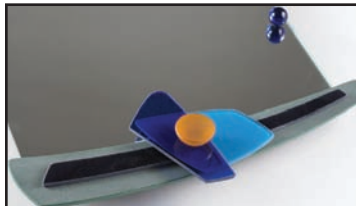
PM 74



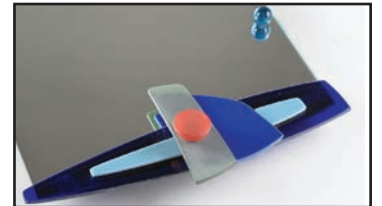
PM 75



PM 76



PM 77



PM 78

GEORGE PONZINI ART GLASS

359 Jordan Road
Keene, New Hampshire 03431

**IMPORTANT!
PLEASE FILE**